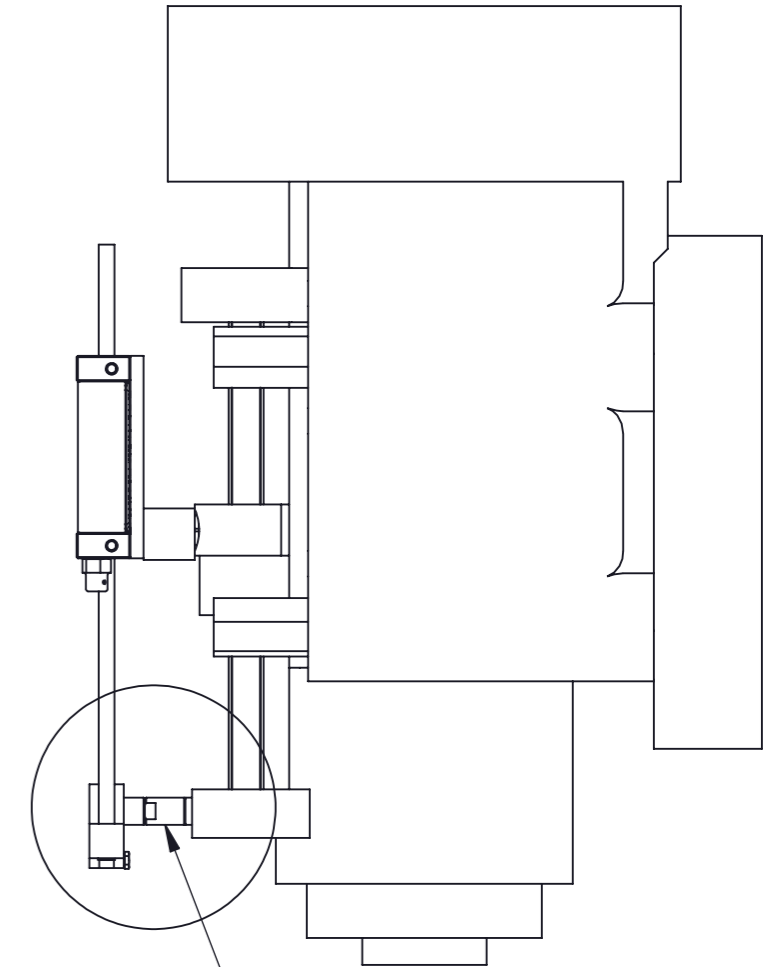
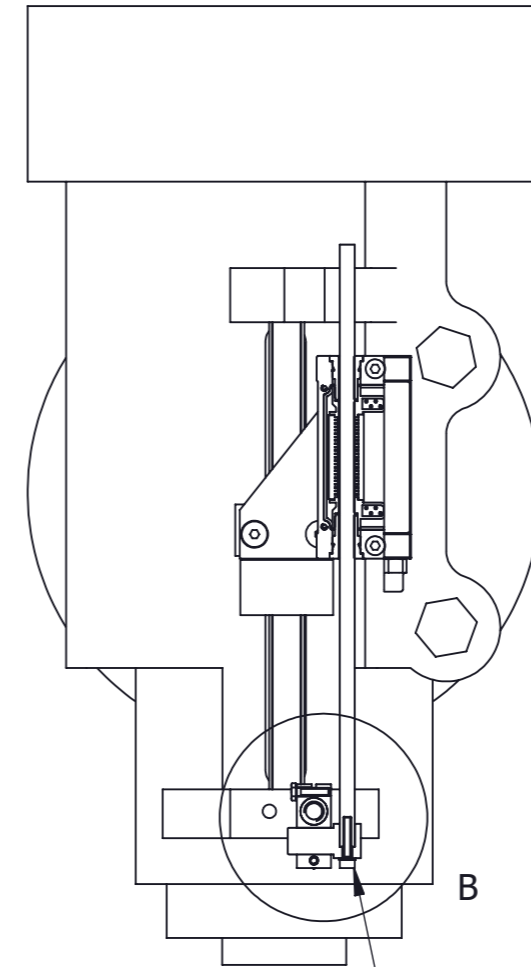
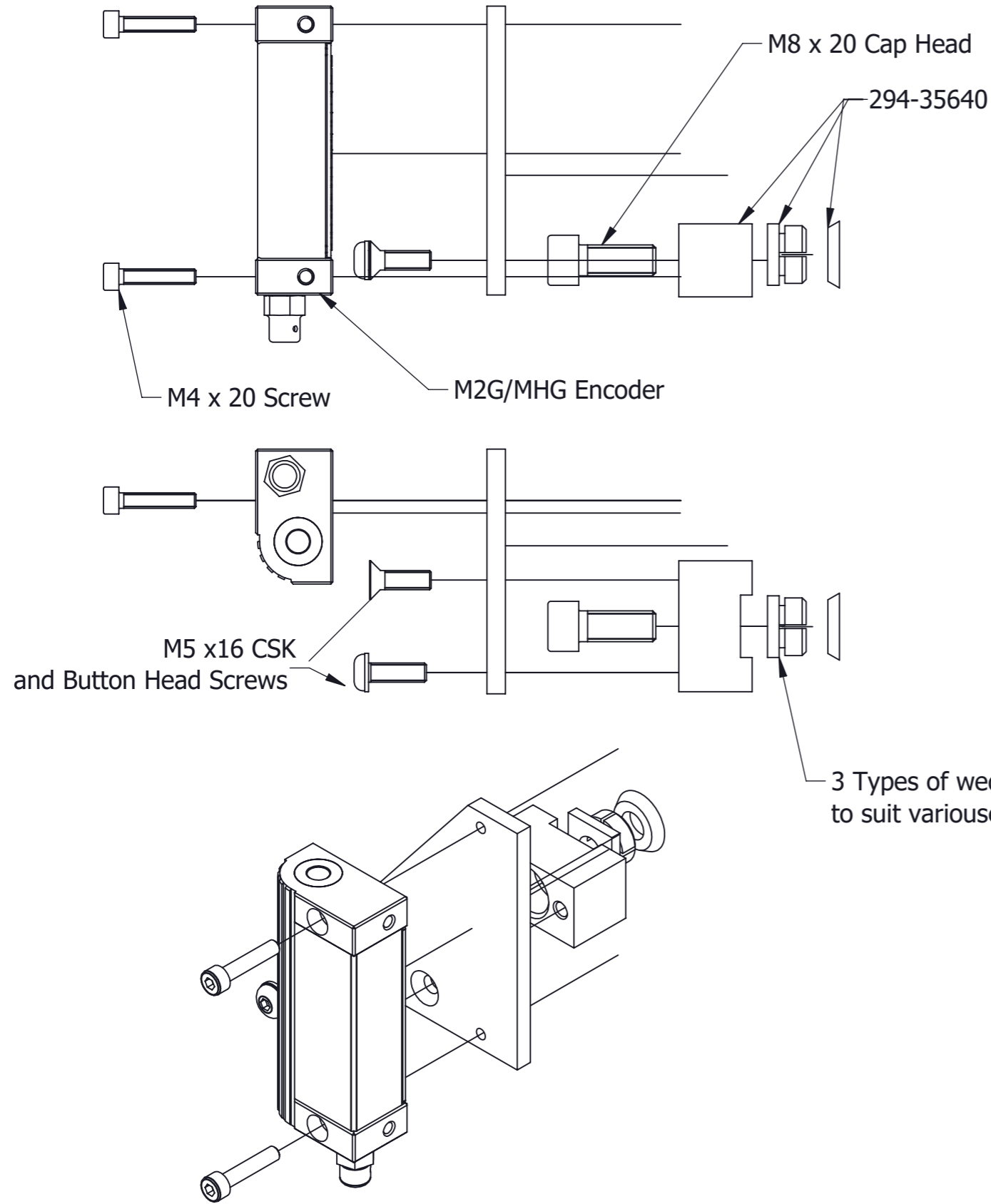
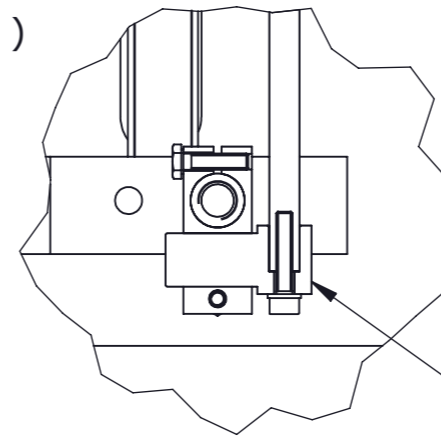


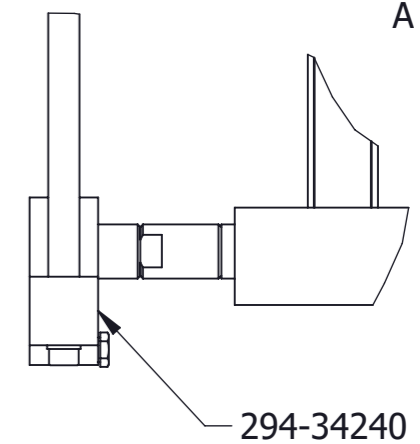
Note: Standard Newall tolerances apply - max travel of 275mm for single end mounting.



B (1 : 2)



A (1 : 2)

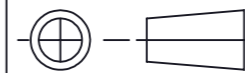


				<b>TITLE</b>	Metric Quill Kit Installation Drawing		<b>MATERIAL/FINISH</b>	N/A		<b>SCALE</b>	UNLESS OTHERWISE STATED: -		TOLERANCES: - 0 DECIMAL PLACES ±0.5 1 DECIMAL PLACES ±0.2 2 DECIMAL PLACES ±0.1	
<b>REV.ISS.</b>	<b>DATE</b>	<b>C.N.No</b>	<b>ALTERATION</b>	<b>DRAWN</b>	chris.wh	<b>DATE</b>	07/05/2015	<b>SHEET</b>	1 OF 2	<b>DRAWING NUMBER</b>	<b>023-82180</b>	<b>REV. ISS.</b>	<b>2</b>	ANGULAR ±1'
2	04/05/22	ECO-49547	P CLIPS ETC. REMOVED	CWH										



Leicester England

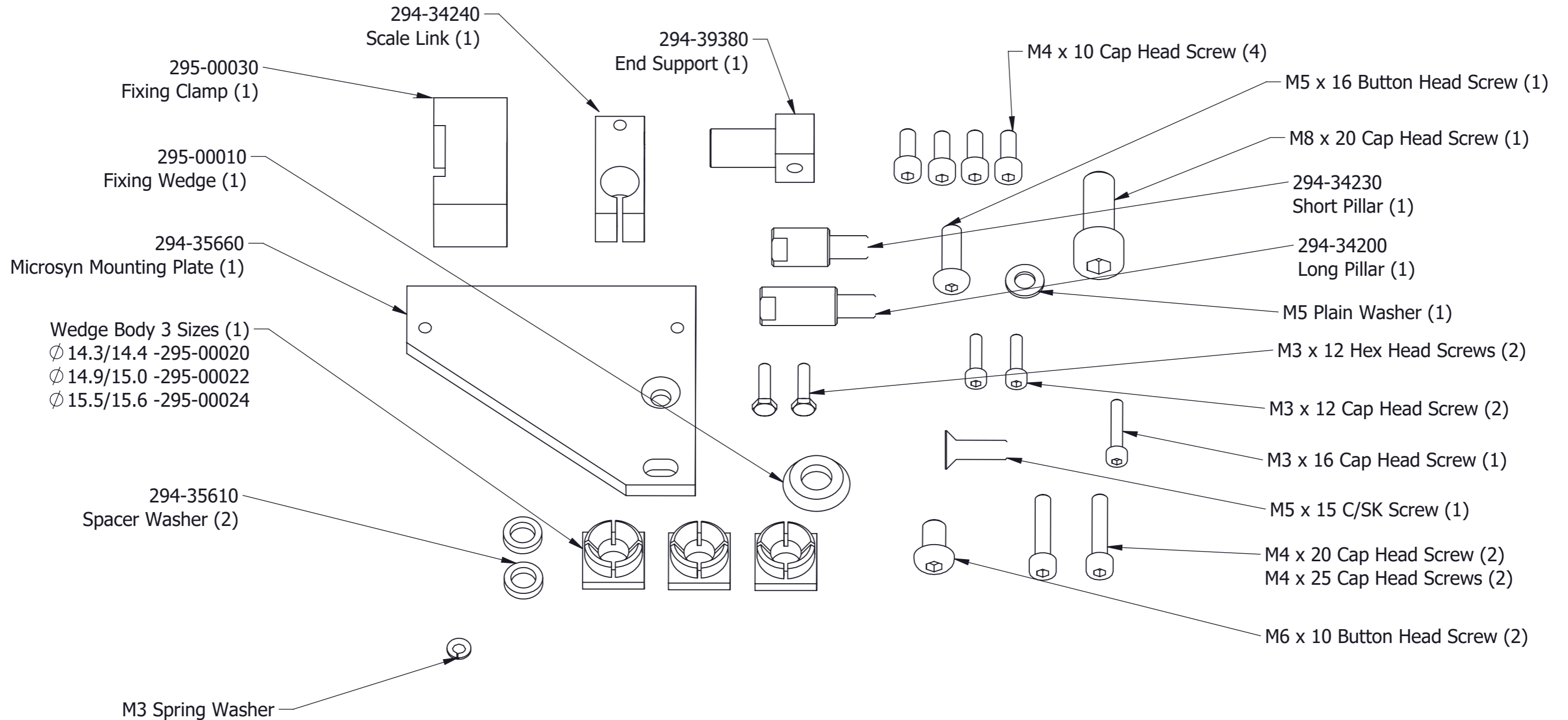
THIS DRAWING IS THE PROPERTY OF NEWALL MEASUREMENT SYSTEMS LTD. THE INFORMATION THEREON MAY NOT BE COPIED OR USED WITHOUT WRITTEN PERMISSION



# NEWALL

## Kit Contents Quill Kit - Metric Part No: 600-65480

To mount 1 Microsyn or Microsyn-LT Scale <275mm Travel on the z axis (quill)



				<b>TITLE</b> 600-65480 Kit Contents and Installation Instructions		<b>MATERIAL/FINISH</b> N/A		<b>SCALE</b> N/A		UNLESS OTHERWISE STATED: - TOLERANCES: - 0 DECIMAL PLACES ±0.5 1 DECIMAL PLACES ±0.2 2 DECIMAL PLACES ±0.1 DIMENSIONS ARE IN M.M ANGULAR ±1'		
2	04/05/22	ECO-495647	P CLIPS ETC. REMOVED	CWH								
1	27/1/16	ECN9543	CHANGES TO PT NUMBERS AND WEDGE DESIGN	CWH	<b>DRAWN</b>	chris.wh			THIS DRAWING IS THE PROPERTY OF NEWALL MEASUREMENT SYSTEMS LTD. THE INFORMATION THEREON MAY NOT BE COPIED OR USED WITHOUT WRITTEN PERMISSION			
REV.ISS.	DATE	C.N.No	ALTERATION	DATE	07/05/2015	Leicester					England	<b>SHEET</b> 2 OF 2