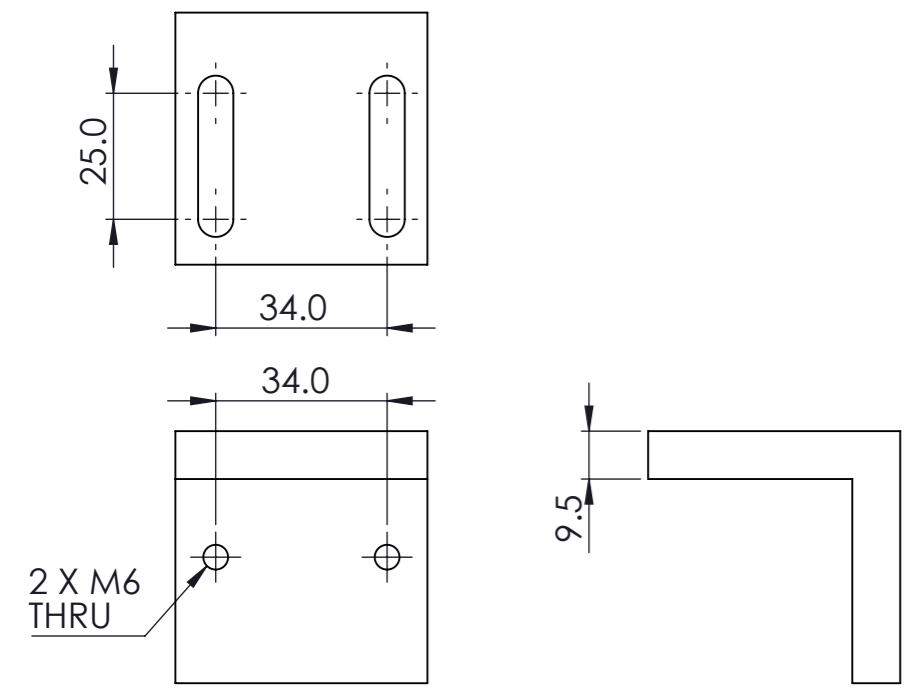
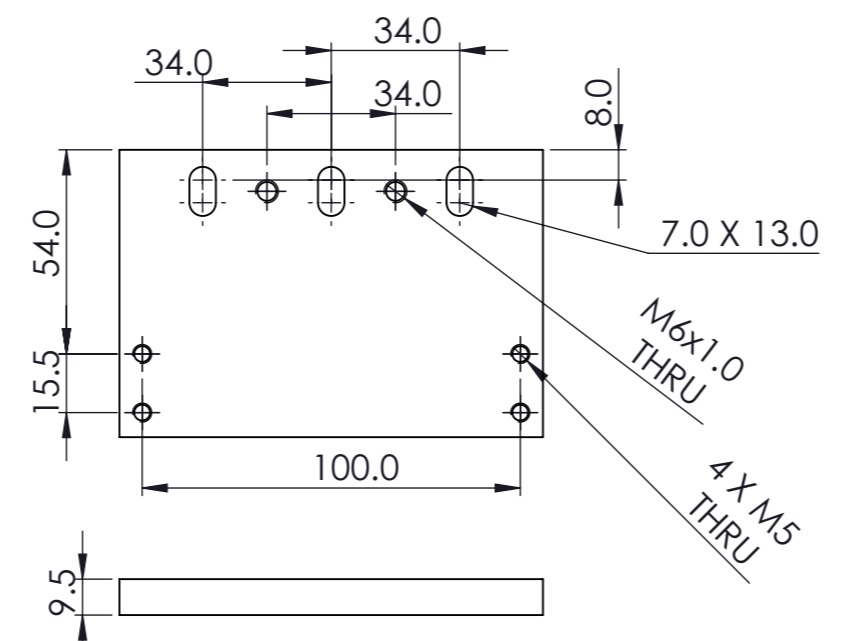


**KIT CONTENTS & HOLE DIMESNIIONS**

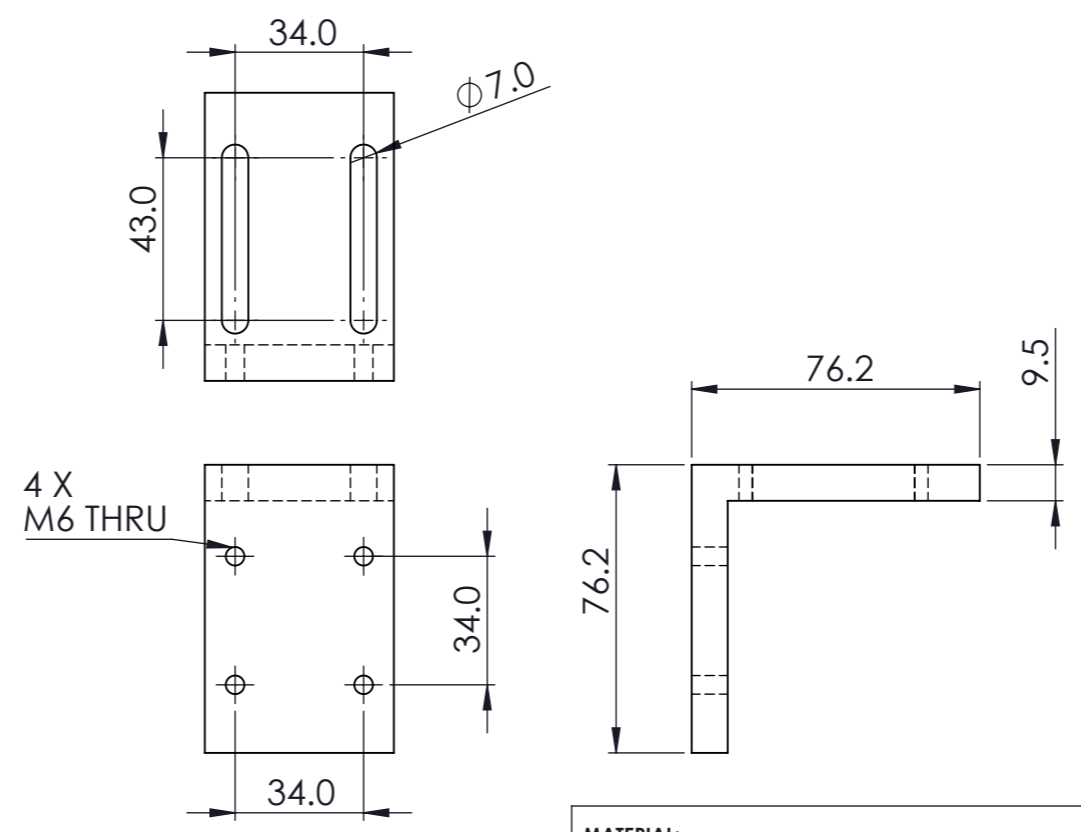
(QTY1) ED-2768/1 - SMALL ANGLE



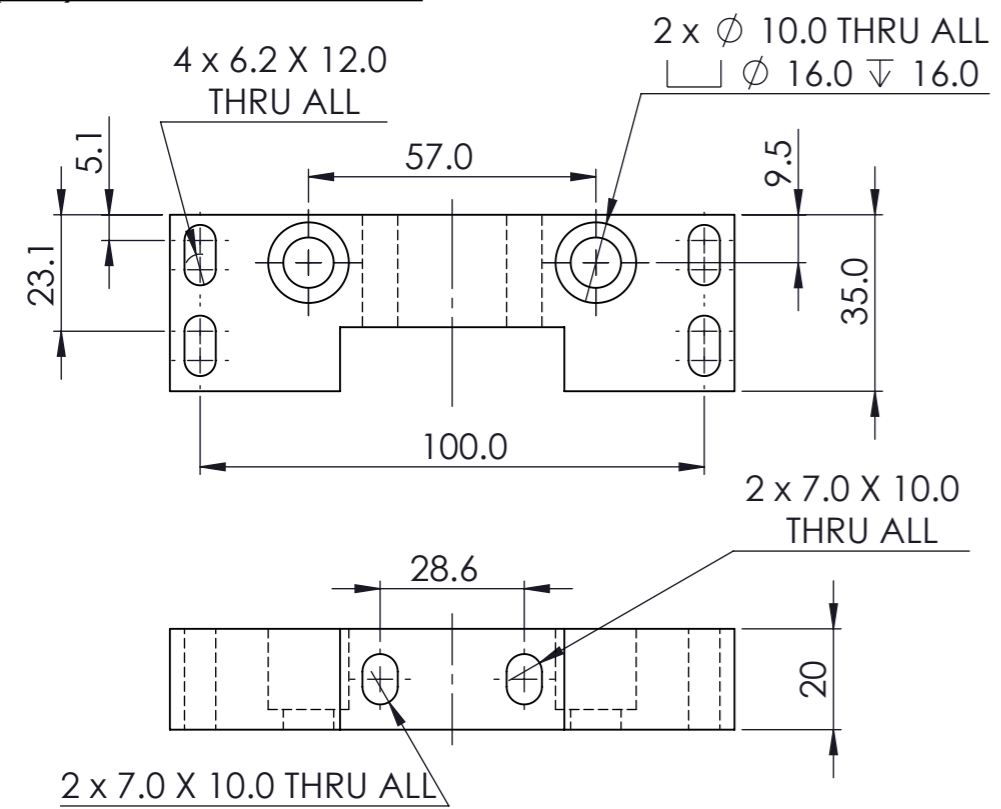
(QTY1) 295-01850 - LARGE ENCODER MOUNTING PLATE



(QTY1) ED-2768/10 LARGE ANGLE



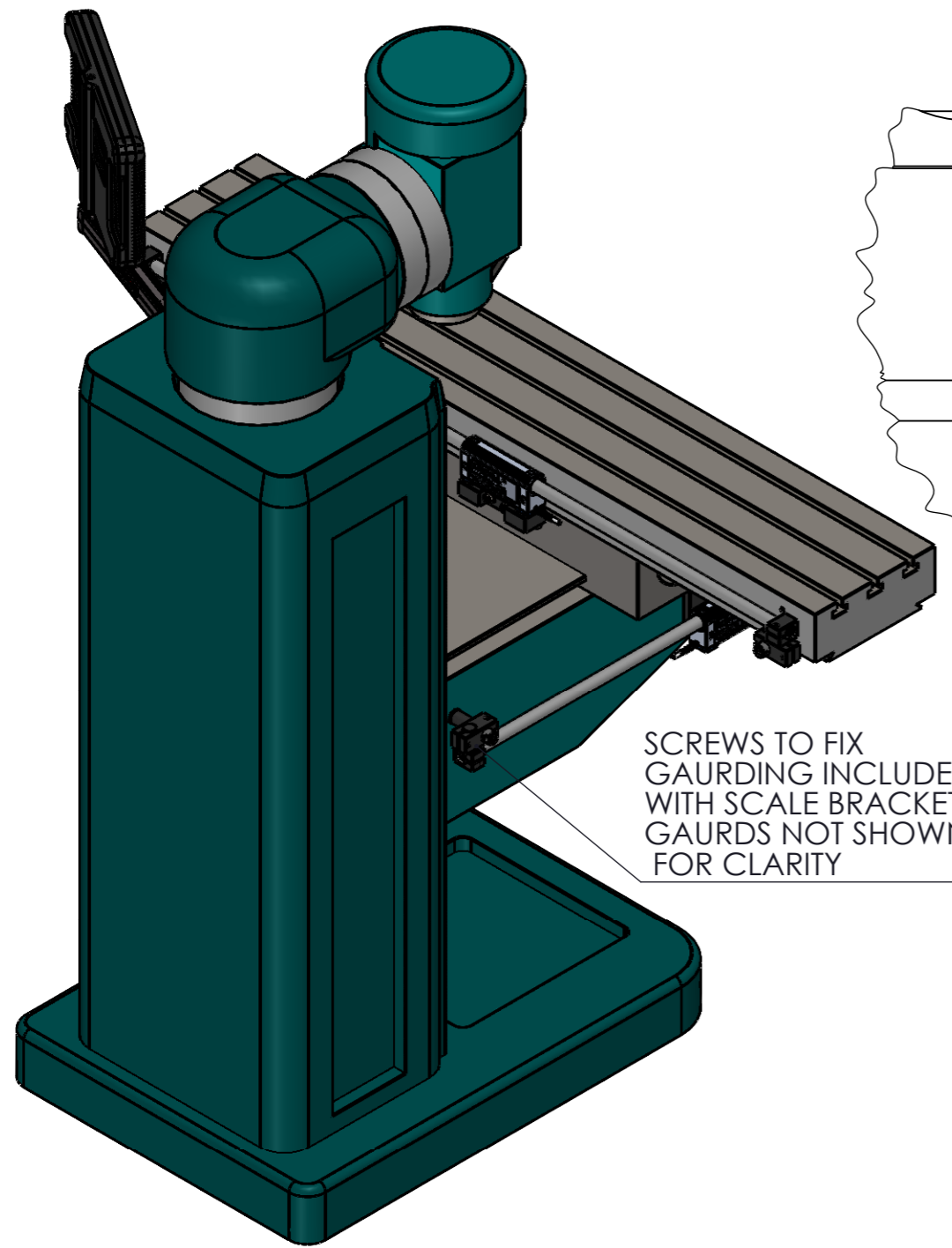
(QTY1) 295-01858 - X AXIS BRACKET



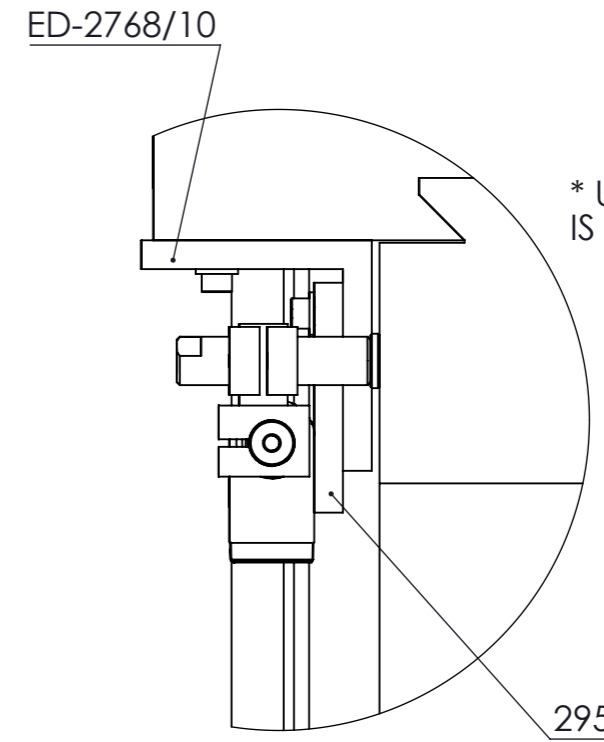
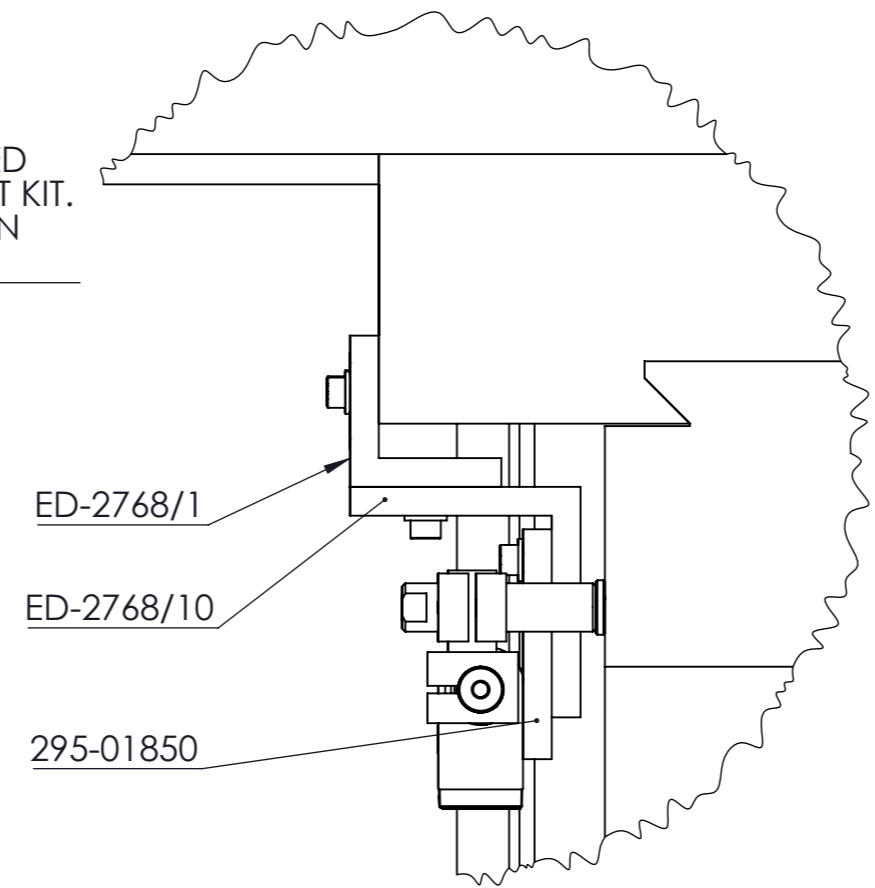
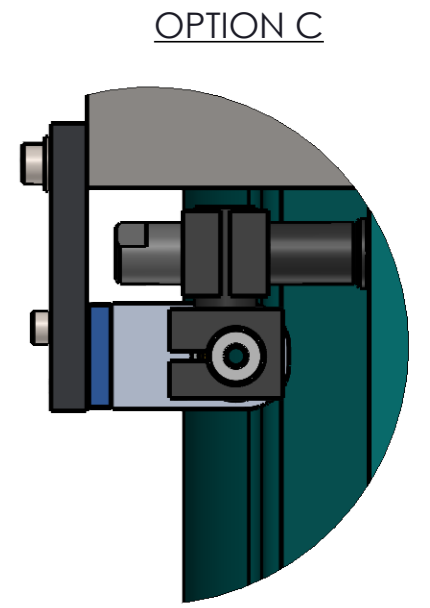
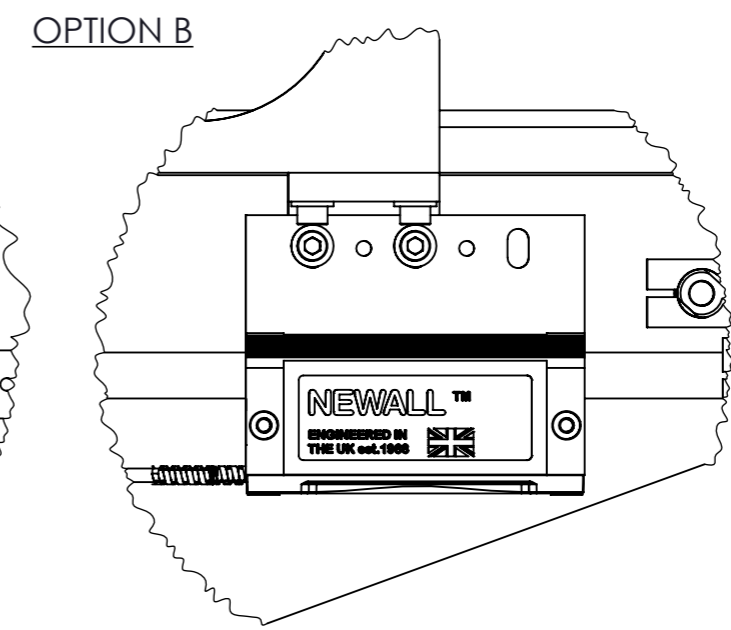
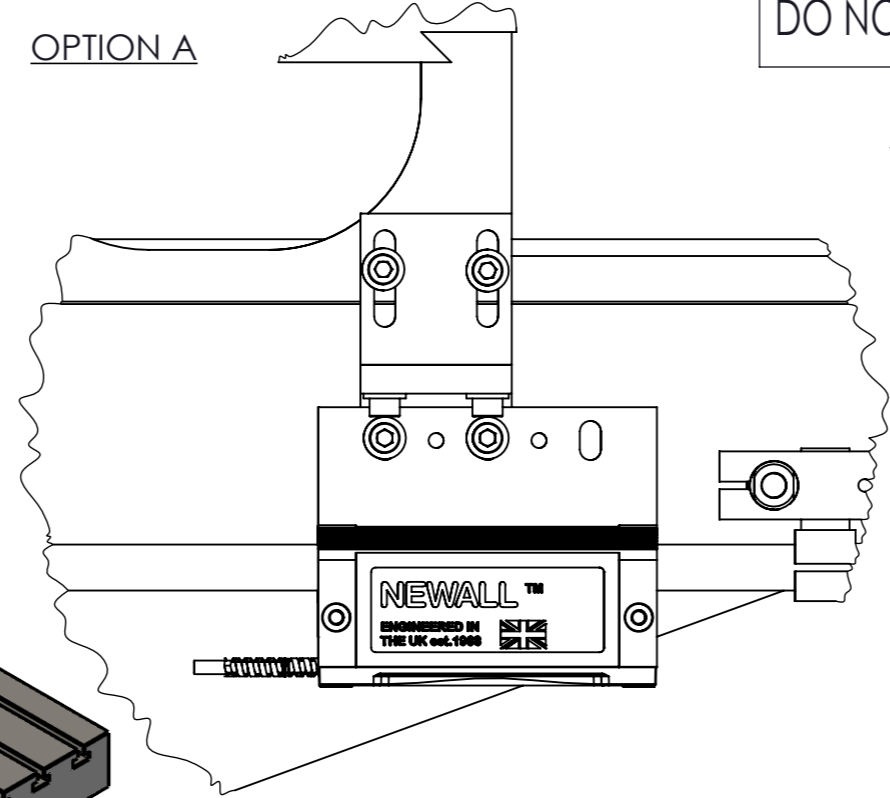
Kit No:	MBKS01	
Description	2 AXIS KNEE MILL KIT X AND Y AXIS - 2 X SPHEROSYN SERIAL	
<b>BOM</b>		
Pt no	Description	Qty
ED-2768/1	SMALL ANGLE	1
295-01850	LRG ENCODER MOUNTING PLATE	1
ED-2768/10	HD TAPPED ANGLE	1
295-01858	X AXIS BRACKET	1
	M5x30 SOC CAP HD SCREW	4
	M5x20 SOC CAP HD SCREW	2
	M6x20 SOC CAP HD SCREW	6
	M6x25 SCO CAP HD SCREW	4
	1/4"-20UNC x 3/4" LNG SOC CAP HD SCREW	2
	M6 FLAT WASHER FORM A	10
	M5 FLAT WASHER FORM A	4
	M6 x 30 SOC CAP HD SCREW	2
	M6 X 12 GRUB SCREW	2

<b>MATERIAL:</b>	<b>NOTE:</b> ENSURE: SHARP EDGES AND BORES ARE DEBURRED SURFACE FINISH HAS NO BLEMISHES OR SCRATCHES AND PARTS ARE CLEAN
<b>FINISH:</b>	<b>SCALE:</b> UNLESS OTHERWISE TOLERANCES:- 0 DECIMAL PLACES ±0.5 N.T.S. STATED:- 1 DECIMAL PLACE ±0.2 DIMENSIONS ARE IN M.M. 2 DECIMAL PLACES ±0.1 THREADS ARE METRIC COARSE ANGULAR ±1°
<b>WEIGHT:</b> 0.14 KG	

				<b>TITLE:</b> MBKS01 - BRACKET KIT	
1	14/4/22	N/A	MISC BOM AND DESIGN CHANGES	CWH	
<b>REV</b>	<b>DATE</b>	<b>ECO</b>	<b>ALTERATION</b>	<b>DRAWN:</b> C.WHITMORE	21/06/2021
				<b>CHECKED:</b>	
				<b>APPROVED:</b>	



SCREWS TO FIX GAURDING INCLUDED WITH SCALE BRACKET KIT. GAURDS NOT SHOWN FOR CLARITY



\* USE OF JACKING SCREWS IS RECOMMENDED TO ADJUST

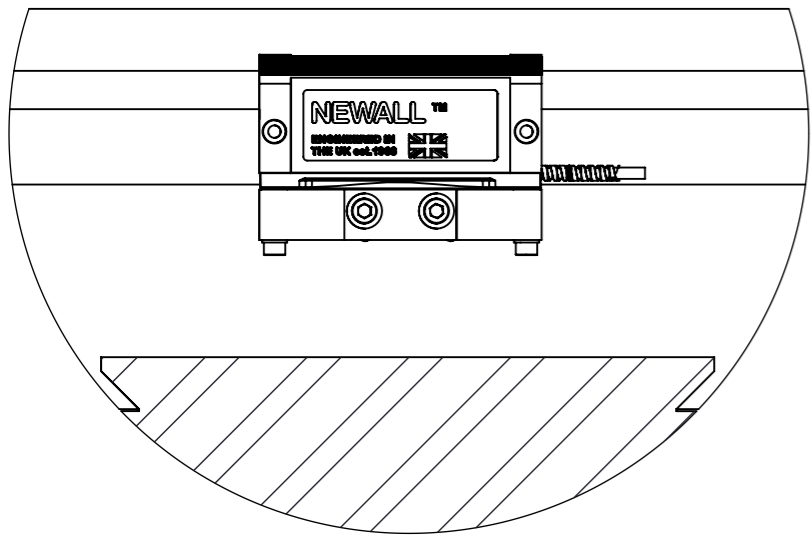
NOTE: LEFT/RIGHT HAND SIDE INSTALLATION WILL DEPEND ON THE USER AND SPECIFIC MACHINE.

NOTE: OTHER ORIENTATIONS OF MOUNTING POSSIBLE. SOME MODIFICATION OF BRACKETS (DRILLING OUT HOLES) MAY BE REQUIRED

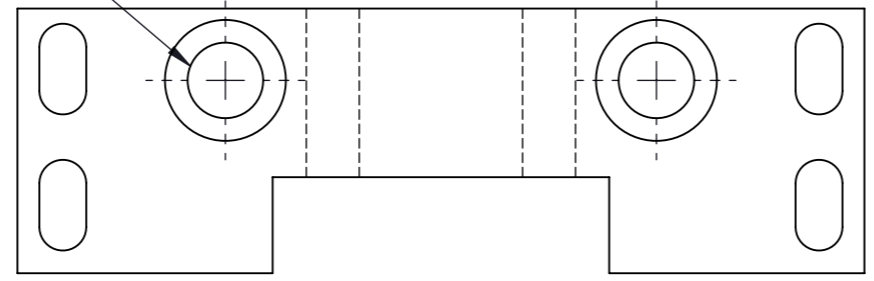
<b>MATERIAL:</b>		<b>NOTE:</b> ENSURE: SHARP EDGES AND BORES ARE DEBURRED SURFACE FINISH HAS NO BLEMISHES OR SCRATCHES AND PARTS ARE CLEAN	
<b>FINISH:</b>		<b>SCALE</b>	UNLESS OTHERWISE TOLERANCES:- 0 DECIMAL PLACES ±0.5
<b>WEIGHT:</b> 0.14 KG		N.T.S	1 DECIMAL PLACE ±0.2
			2 DECIMAL PLACES ±0.1
			ANGULAR ±1°

				<b>TITLE:</b>	
				MBKS01 - BRACKET KIT	
1	14/4/22	N/A	MISC BOM AND DESIGN CHANGES	CWH	
<b>REV</b>	<b>DATE</b>	<b>ECO</b>	<b>ALTERATION</b>	<b>DRAWN:</b>	<b>APPROVED:</b>
				C. WHITMORE	21/06/2021

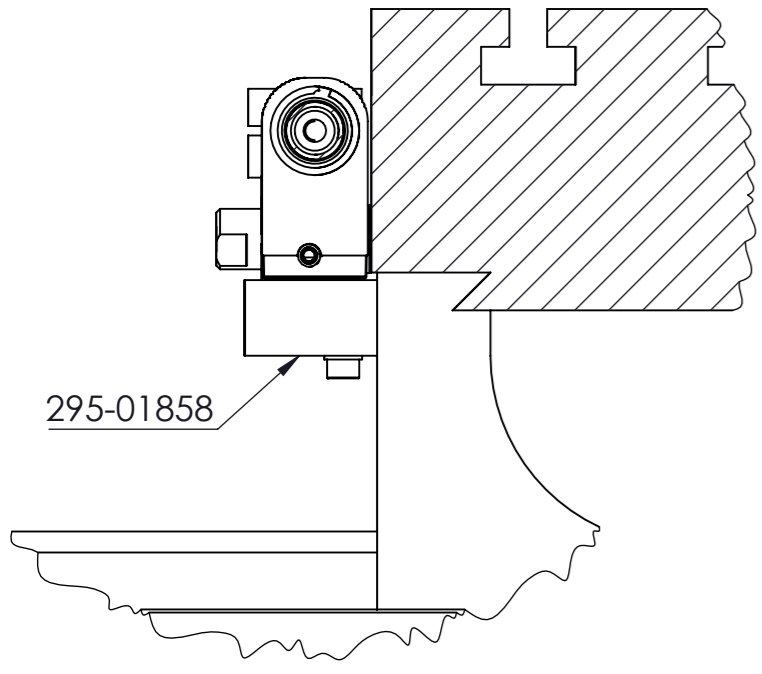
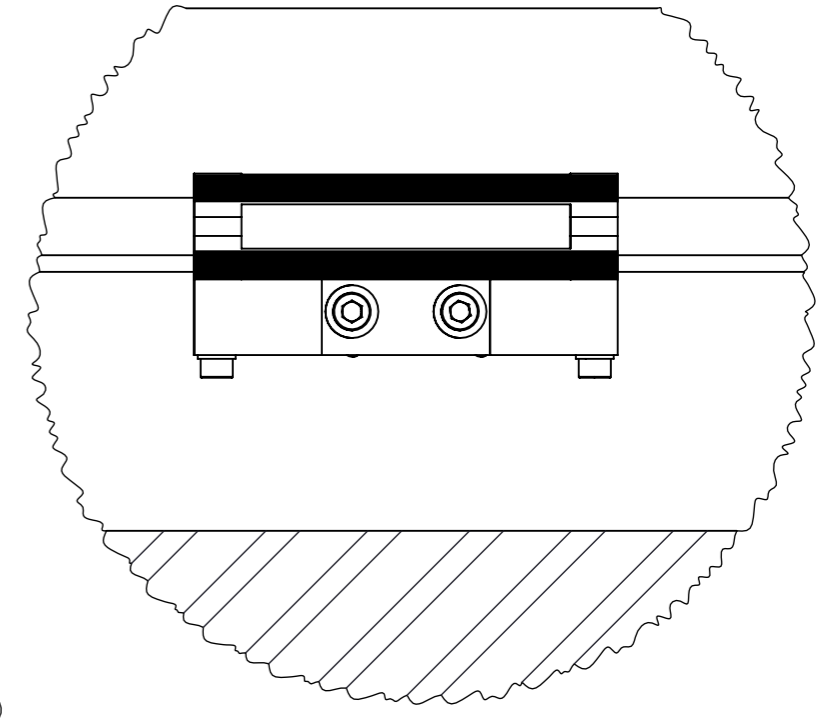
OPTION A



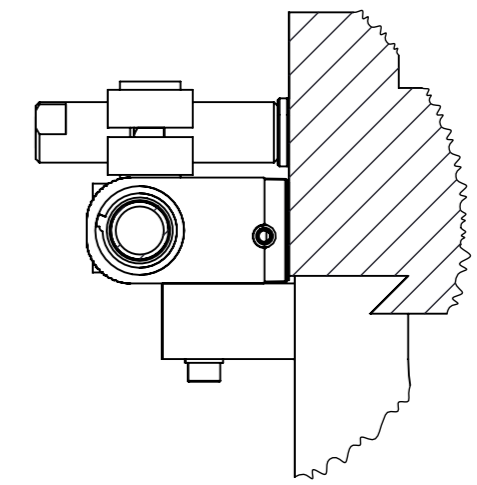
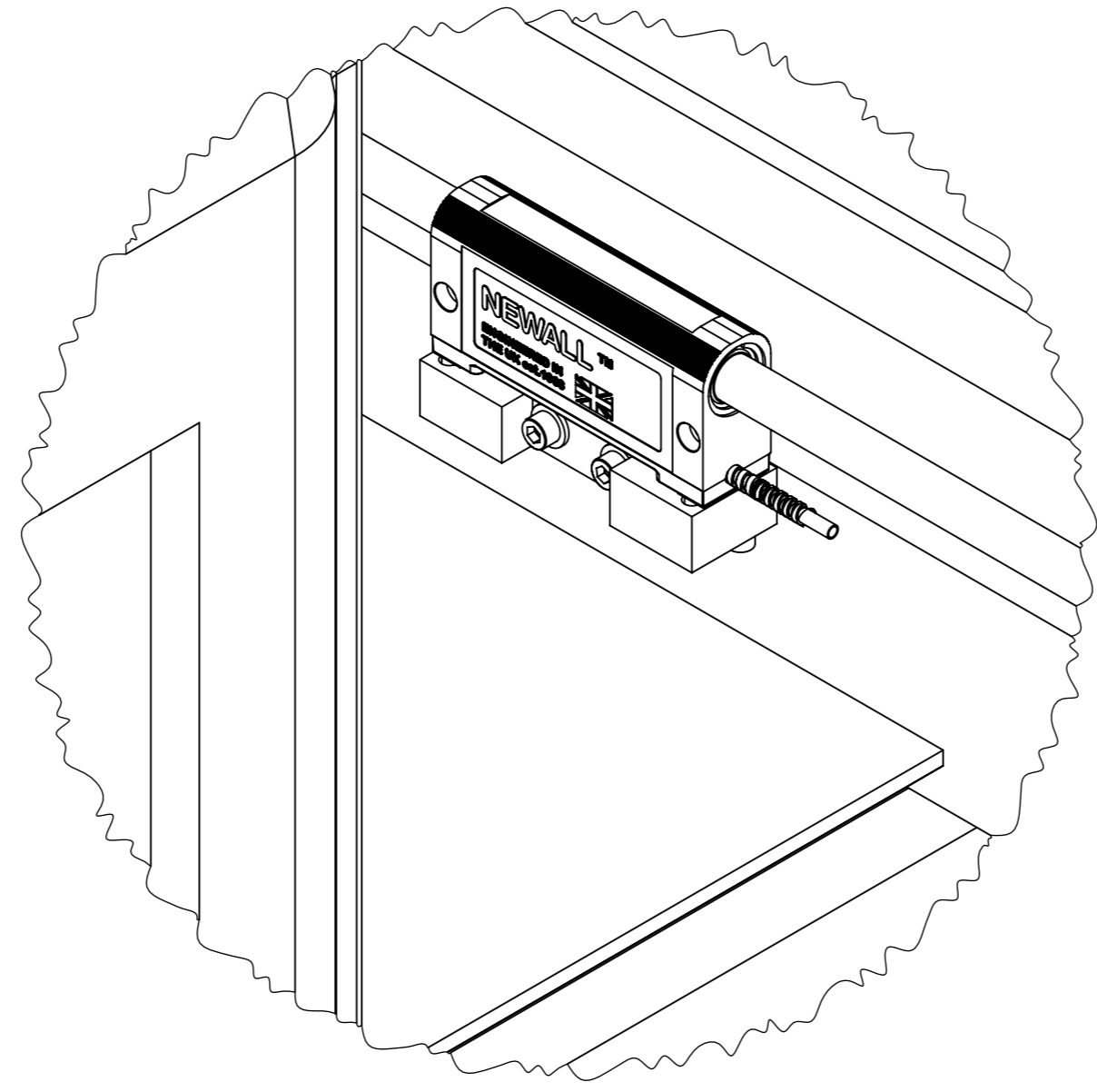
\*FIT EXISTING HOLES ON SOME MACHINES



OPTION B



295-01858



<b>MATERIAL:</b>		<b>NOTE:</b> ENSURE: SHARP EDGES AND BORES ARE DEBURRED SURFACE FINISH HAS NO BLEMISHES OR SCRATCHES AND PARTS ARE CLEAN	
<b>FINISH:</b>		<b>SCALE</b>	TOLERANCES:- 0 DECIMAL PLACES ±0.5
<b>WEIGHT:</b> 0.14 KG		N.T.S	1 DECIMAL PLACE ±0.2
			2 DECIMAL PLACES ±0.1
			ANGULAR ±1°

REV	DATE	ECO	ALTERATION
1	14/4/22	N/A	MISC BOM AND DESIGN CHANGES CWH

**TITLE:** MBKS01 - BRACKET KIT

<b>DRAWN:</b> C.WHITMORE	21/06/2021
<b>CHECKED:</b>	
<b>APPROVED:</b>	

Leicester **NEWALL** England

THIS DRAWING IS THE PROPERTY OF NEWALL MEASUREMENT SYSTEMS LIMITED. THE INFORMATION THEREON MAY NOT BE COPIED OR USED WITHOUT WRITTEN PERMISSION

<b>SHEET</b> 3 OF 3	<b>DRAWING NUMBER</b> 023-82551	<b>REV. ISS.</b> 1
---------------------	---------------------------------	--------------------