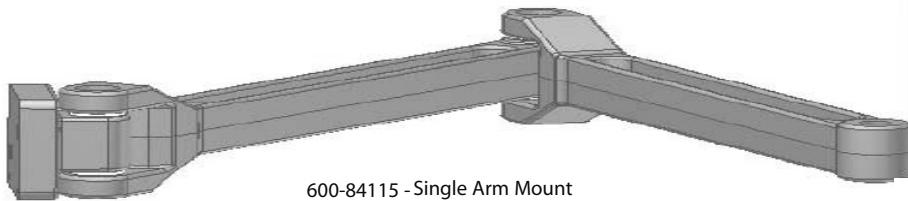




DISPLAY MOUNTING ARMS

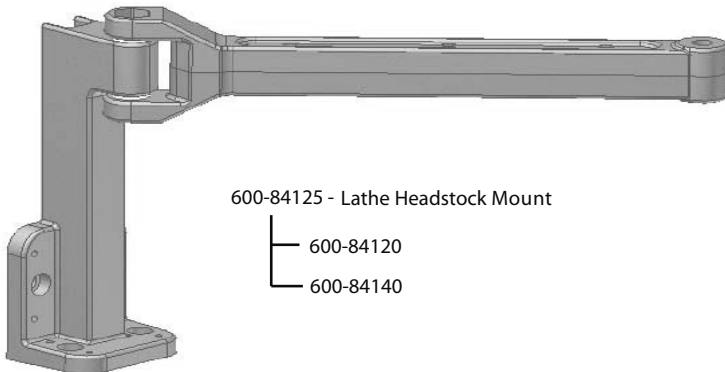
Display Mounting Arms For Newall Readouts

Newall's new mounting arms provide a sturdy and attractive way of fixing the readout to a machine. The arms incorporate cable management to make installation easier and decrease the possibility of cable snags.



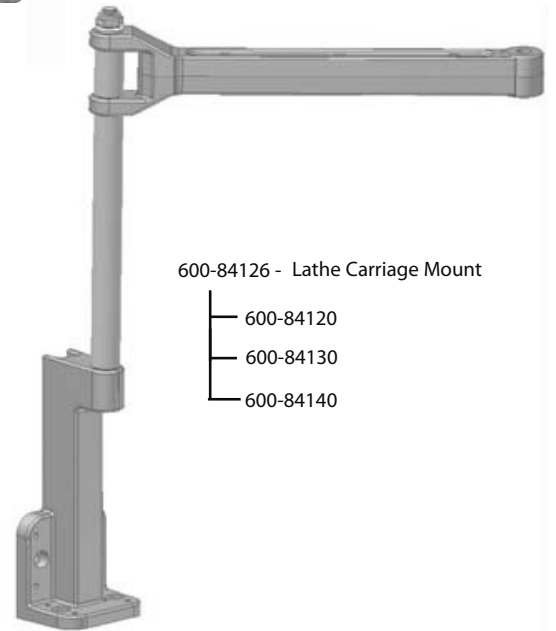
600-84115 - Single Arm Mount

- 600-84110
- 600-84140



600-84125 - Lathe Headstock Mount

- 600-84120
- 600-84140



600-84126 - Lathe Carriage Mount

- 600-84120
- 600-84130
- 600-84140

Specification

- » High pressure die cast aluminum construction
- » Durable polyester powder painted
- » Imperial and metric mounting screws supplied
- » Jacking points supplied for alignment purposes
- » Compatible with all Newall DRO equipment

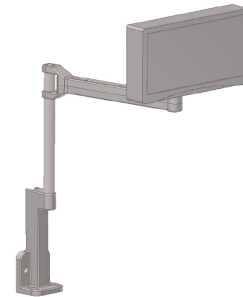
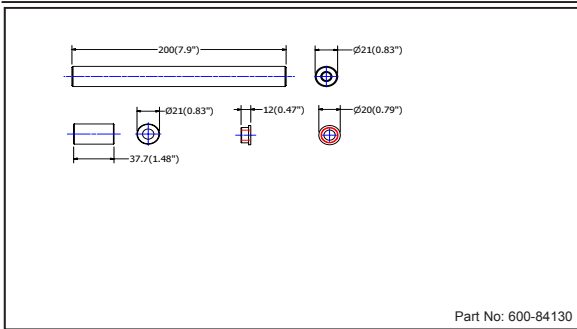
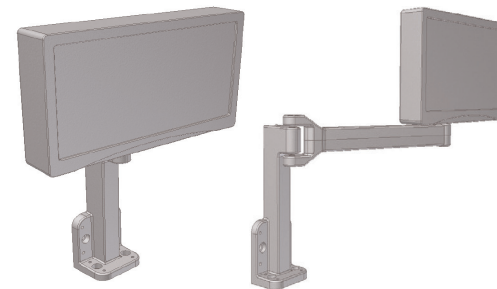
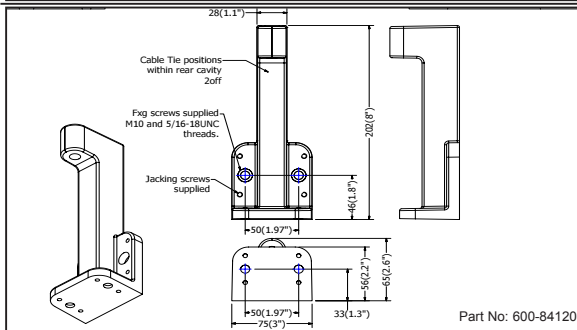
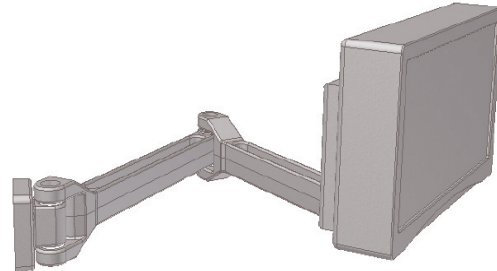
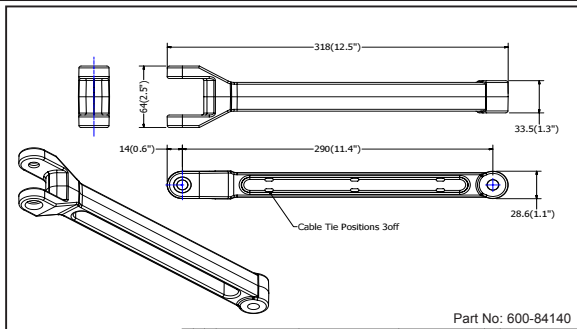
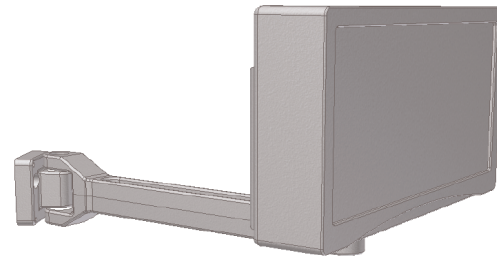
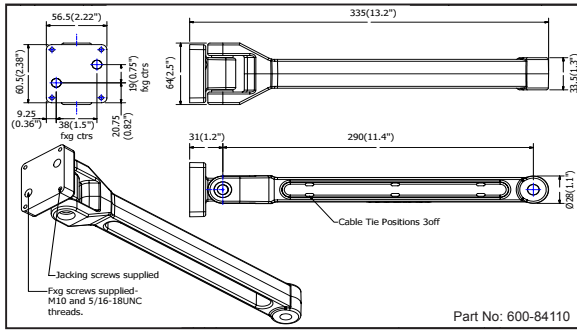
Benefits of Display Mounting Arms

- » Built-in cable management (zip tie points)



- » All parts are interchangeable
- » Improved overall strength

DIMENSIONS



Datasheets provided by Sensata Technologies, Inc., its subsidiaries and/or affiliates ("Sensata") are solely intended to assist third parties ("Buyers") who are developing systems that incorporate Sensata products (also referred to herein as "components"). Buyer understands and agrees that Buyer remains responsible for using its independent analysis, valuation, and judgment in designing Buyer's systems and products. Sensata datasheets have been created using standard laboratory conditions and engineering practices. Sensata has not conducted any testing other than that specifically described in the published documentation for a particular datasheet. Sensata may make corrections, enhancements, improvements, and other changes to its datasheets or components without notice. Buyers are authorized to use Sensata datasheets with the Sensata component(s) identified in each particular datasheet. HOWEVER, NO OTHER LICENSE, EXPRESS OR IMPLIED, BY ESTOPPEL OR OTHERWISE TO ANY OTHER SENSATA INTELLECTUAL PROPERTY RIGHT, AND NO LICENSE TO ANY THIRD PARTY TECHNOLOGY OR INTELLECTUAL PROPERTY RIGHT, IS GRANTED HEREIN. SENSATA DATASHEETS ARE PROVIDED "AS IS". SENSATA MAKES NO WARRANTIES OR REPRESENTATIONS WITH REGARD TO THE DATASHEETS OR USE OF THE DATASHEETS, EXPRESS, IMPLIED, OR STATUTORY, INCLUDING ACCURACY OR COMPLETENESS. SENSATA DISCLAIMS ANY WARRANTY OF TITLE AND ANY IMPLIED WARRANTIES OF MERCHANTABILITY, FITNESS FOR A PARTICULAR PURPOSE, QUIET ENJOYMENT, QUIET POSSESSION, AND NON-INFRINGEMENT OF ANY THIRD PARTY INTELLECTUAL PROPERTY RIGHTS WITH REGARD TO SENSATA DATASHEETS OR USE THEREOF. All products are sold subject to Sensata's terms and conditions of sale supplied at www.sensata.com. SENSATA ASSUMES NO LIABILITY FOR APPLICATIONS ASSISTANCE OR THE DESIGN OF BUYERS' PRODUCTS. BUYER ACKNOWLEDGES AND AGREES THAT IT IS SOLELY RESPONSIBLE FOR COMPLIANCE WITH ALL LEGAL, REGULATORY, AND SAFETY-RELATED REQUIREMENTS CONCERNING ITS PRODUCTS, AND ANY USE OF SENSATA COMPONENTS IN ITS APPLICATIONS, NOTWITHSTANDING ANY APPLICATIONS-RELATED INFORMATION OR SUPPORT THAT MAY BE PROVIDED BY SENSATA. Mailing Address: Sensata Technologies, Inc., 529 Pleasant Street, Attleboro, MA 02703, USA

CONTACT US

Americas

Newall Electronics Inc.
1803 OBrien Rd
Columbus, OH 43228
Tel: +1 614 771 0213
sales@newall.com
newall.com

Rest of World:

Newall Measurement Systems, Ltd.
Business Park, Unit 1 Wharf Way
Glen Parva, Leicester LE2 9UT
United Kingdom
Tel: +44 (0) 116 264 2730
sales@newall.co.uk
newall.co.uk