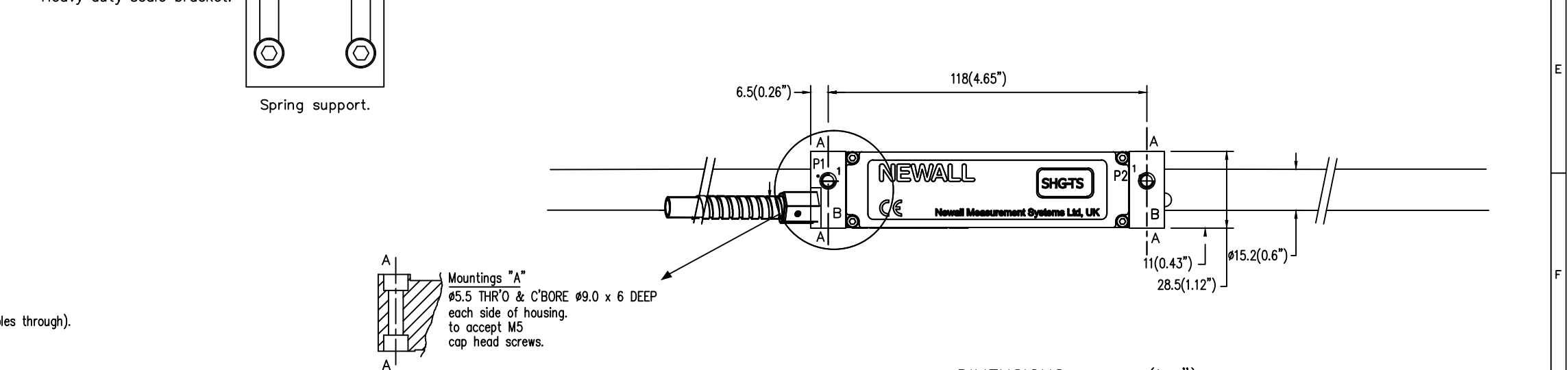
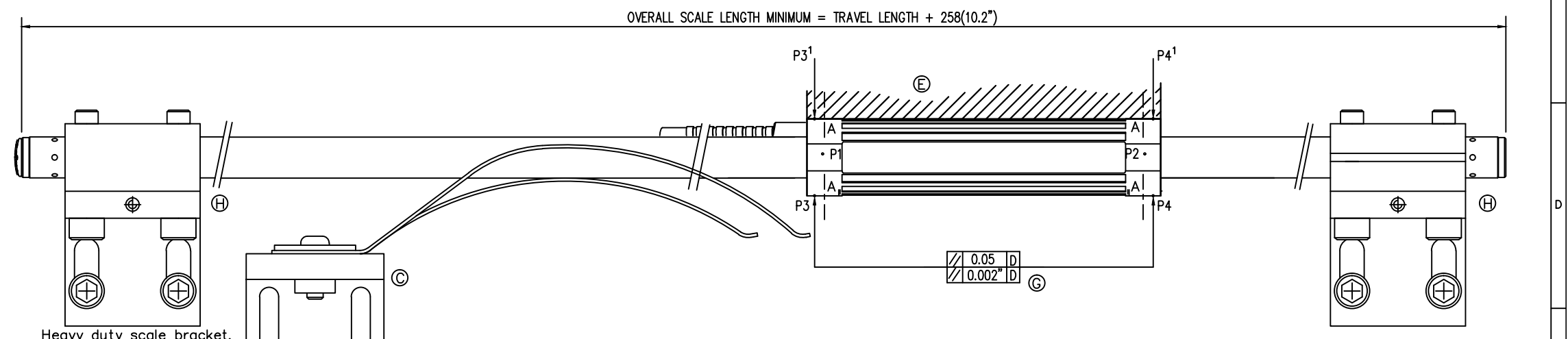


A - Encoder head mounting points 2off for M5 cap head screws (clearance holes through).  
B - Encoder head mounting points 2off for M5 screws (thread depth 12).  
C - Spring support.  
D - Machine Guideway.  
E/F - Encoder head mounting faces.  
G - Indicating parallel alignment required between encoder head and axis travel.  
H - Scale end mounting points to machine bed.  
P - Installation alignment points.



DIMENSIONS - mm (ins")

FOR FURTHER INFORMATION REFER TO INSTALLATION MANUAL

SPRING SUPPORTS ARE INTENDED FOR USE WHERE THE READER HEAD IS MOVING AND THE SCALE TUBE IS STATIONARY.  
REFER TO INSTALLATION MANUAL FOR RECOMMENDED NUMBER AND POSITONAL DETAILS OF SPRING SUPPORTS

REV. ISS. DATE C.N.No. ALTERATION			REV. ISS. DATE C.N.No. ALTERATION			TITLE DIMENSIONAL DETAILS for SHG-TT, SHG-PV, SHG-TS, SHG-VP and SHG-VS series encoders (>100")		MATERIAL/ FINISH		SCALE (ON A1)		UNLESS OTHERWISE TOLERANCES: - 0 DECIMAL PLACES $\pm 0.5$ STATED :- 1 DECIMAL PLACE $\pm 0.2$ DIMENSIONS ARE IN MM. 2 DECIMAL PLACES $\pm 0.1$ ANGULAR $\pm 1'$	
1			2			DRAWN C.WHITMORE 25-11-14		Leicester NEWALL England		SHEET 1 OF 1		DRAWING NUMBER 316-87295 REV. ISS. 0	