

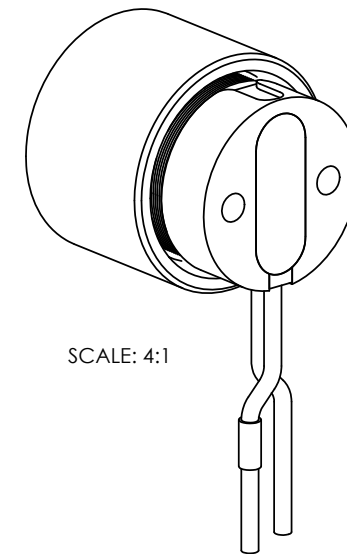
Winding Constants*	Units	Tol	Symbol	Wdg	A
DC Resistance	Ohms	± 12.5%	R		4.25
Voltage @ F _{PS}	Volts	Nominal	V _{PS}		3.83
Current @ F _{PS}	Amps	Nominal	I _{PS}		0.9
Current @ F _{CS}	Amps	Nominal	I _{CS}		0.52
Force Sensitivity @ F _{PS}	N/Amp	± 10%	K _{FPS}		0.915
	oz/Amp	± 10%			3.29
Force Sensitivity @ No-Load	N/Amp	± 10%	K _{FNL}		0.915
	oz/Amp	± 10%			3.29
Back EMF Constant	V/(m/sec)	± 10%	K _B		0.915
	V/(ft/sec)	± 10%			0.279
Inductance ****	milli-Henry	± 15%	L		0.104

Linear Actuator Parameters*	Units	Symbol	Value
Peak Stall Force**	N	F _{PS}	0.82
	oz		2.95
Continuous Stall Force ***	N	F _{CS}	0.48
	oz		1.73
Actuator Constant	N/sqrt(Watt)	K _A	0.444
	oz/sqrt(Watt)		1.6
Electrical Time Constant	milli-sec	τ _E	0.024
Mechanical Time Constant	milli-sec	τ _M	9.44
Theoretical Acceleration	m/s ²	a _T	440.9
	ft/s ²		1,446.4
Maximum Theoretical Frequency @ Full Stroke and Sinusoidal/Triangular Motion	Hz	f _{max}	148.3/164.7
Power I ² R @ F _{PS}	Watts	P _{PS}	3.44
Stroke	± mm	S _A	0.508
	± in		0.02
Clearance on each side of the Coil Assembly	mm	D _C	0.38
	in		0.015
Thermal Resistance of Coil in still air	°C/Watt	Θ _{TH}	74
Maximum Allowable Coil Winding Temp	°C	T _W	155
Mass, Moving Coil Assembly	g	M _{CA}	1.86
	oz		0.066
Mass, Field Assembly	g	M _{FA}	6.57
	oz		0.23

DISCLAIMERS

- * AT ZERO STROKE AND @ 25 °C AMBIENT TEMPERATURE
- ** 10 SECONDS @ 25 °C AMBIENT & 155 °C COIL TEMPERATURE
- *** @25 °C AMBIENT & 155 °C COIL TEMPERATURE
- **** MEASURED AT 1000 Hz.

ZONE	REV.	REVISION DESCRIPTION	ECN NO.	DATE
	X1			



SOLIDWORKS

FOR REFERENCE ONLY, CHECK LATEST REVISION BEFORE USE.		 1499 POINSETTIA AVENUE SUITE 160 VISTA, CA. 92081	
DRAWN McGHEE DATE 06/08/23 ENGINEER	SENSATA TECHNOLOGIES PROPRIETARY AND CONFIDENTIAL. NEITHER THIS PRINT NOR THE INFORMATION CONTAINED HEREON IS TO BE USED AGAINST THE INTERESTS OF SENSATA TECHNOLOGIES OR AGAINST THE INTERESTS OF ANY OF ITS AFFILIATED COMPANIES OR WHOLLY OWNED SUBSIDIARIES.		
DATE APPROVED	INTERPRET DIMENSIONING AND TOLERANCING PER ASME Y14.5-2009. UNLESS OTHERWISE SPECIFIED DIMENSIONS ARE IN INCHES. TOLERANCES		
DATE APPROVED	DECIMALS X.X ± 0.03 X.XX ± 0.01 X.XXX ± 0.005	ANGLES X.X° ± 0°30'	TITLE LINEAR ACTUATOR
DATE APPROVED	DO NOT SCALE DRAWING	THIRD ANGLE PROJECTION	SIZE DWG NO. C LA05-05-019A
			REV. X1
			SCALE 2:1 SHEET 1 OF 2



4

3

2

1

D

C

B

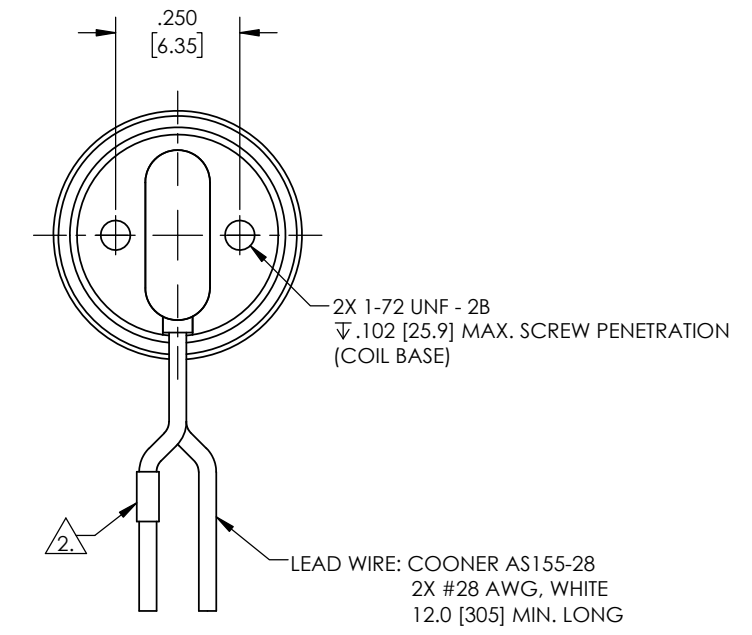
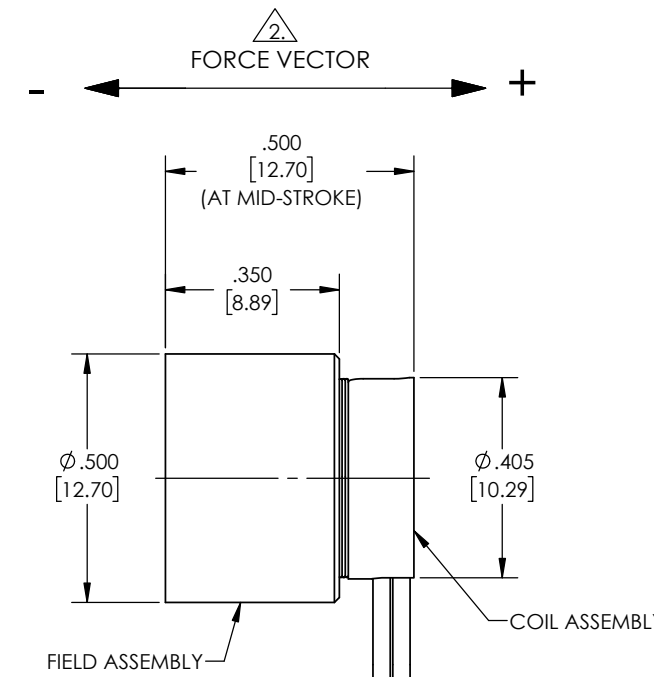
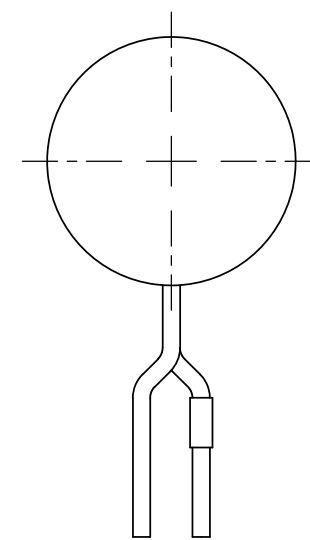
A

D

C

B

A



NOTES: UNLESS OTHERWISE SPECIFIED

- 1. INCH DRAWING. DIMENSIONS IN BRACKETS [] ARE IN MILLIMETERS AND ARE FOR REFERENCE ONLY.
- 2. A POSITIVE (+) VOLTAGE APPLIED TO THE MARKED LEAD WIRE WILL PRODUCE A FORCE ON THE COIL ASSEMBLY IN THE POSITIVE (+) DIRECTION.



		1499 POINSETTIA AVENUE SUITE 160 VISTA, CA. 92081	
BEI Kimco		SIZE C	DWG NO. LA05-05-019A
SCALE 2:1		SOLIDWORKS	REV. X1 SHEET 2 OF 2

4

3

2

1