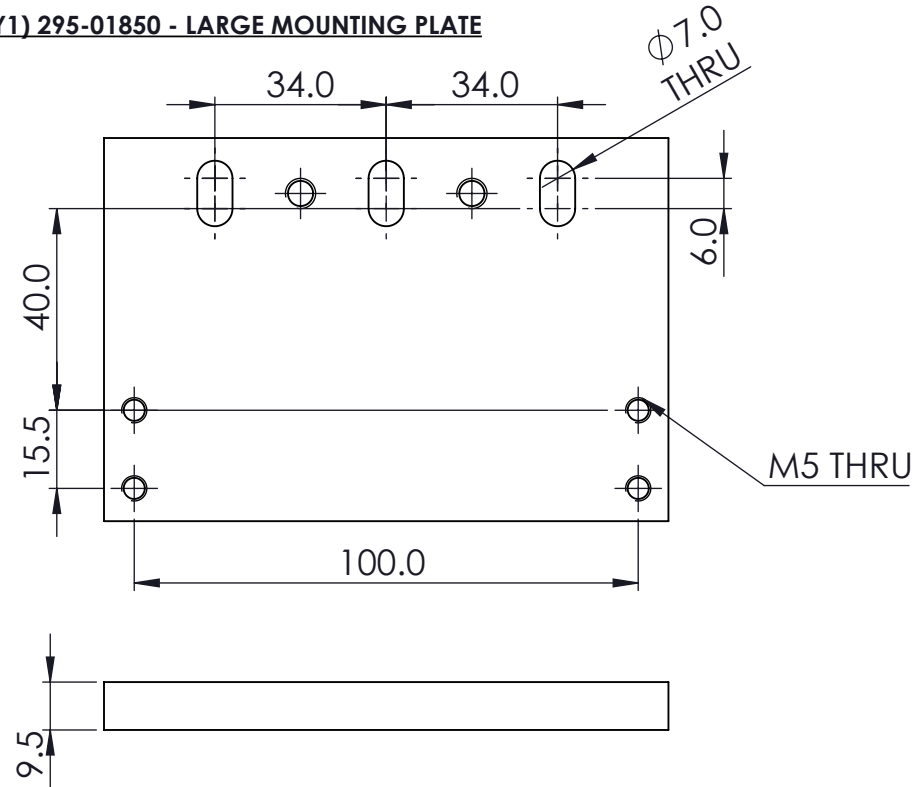
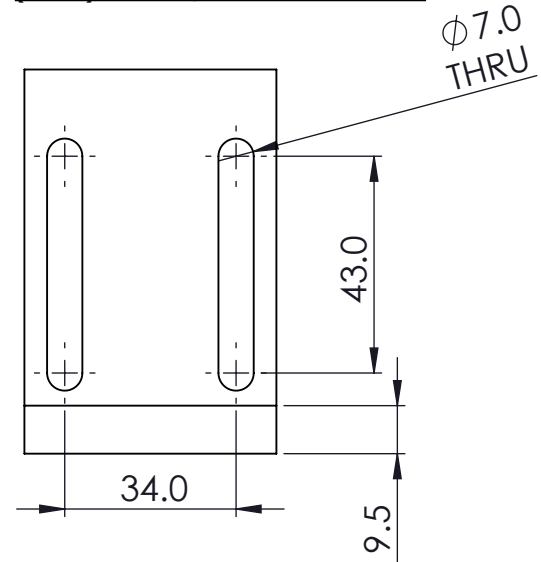


KIT CONTENTS & HOLE DIMENSIONS

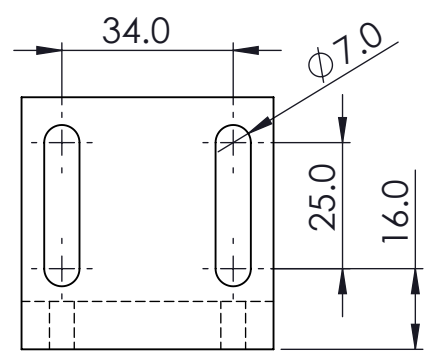
(QTY1) 295-01850 - LARGE MOUNTING PLATE



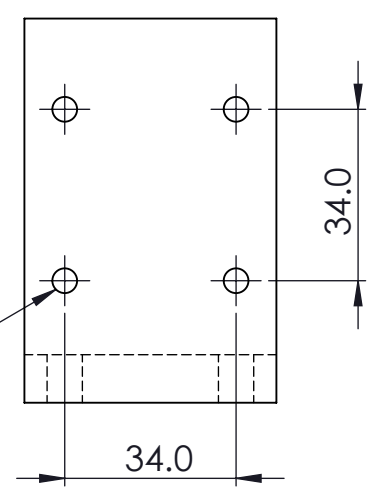
(QTY1) ED-2768/10 - LARGE ANGLE



(QTY1) ED-2768/1 - SMALL ANGLE

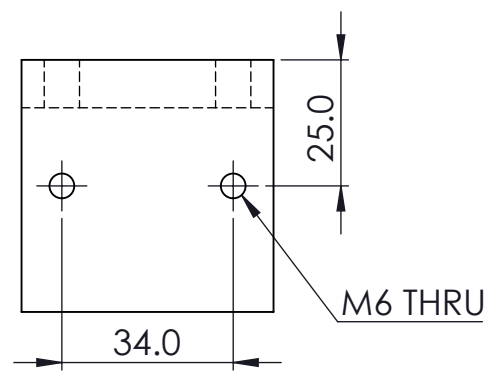


M6 THRU

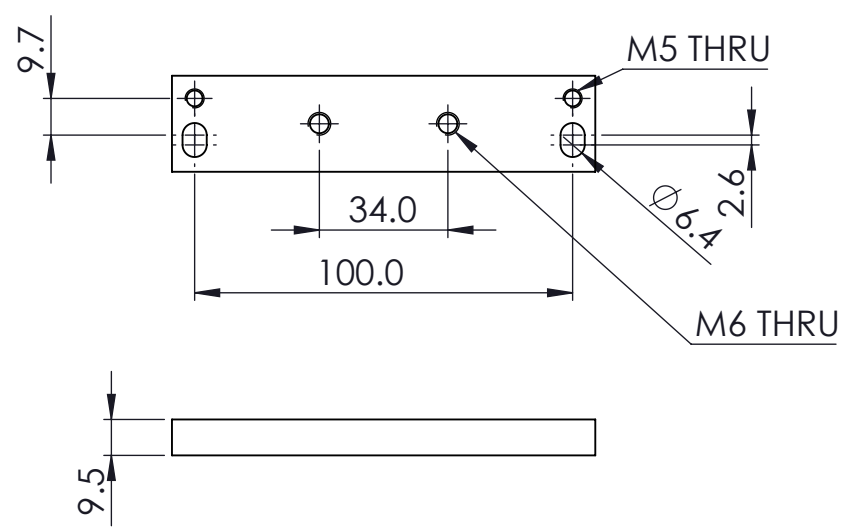


(QTY1) ED-2768/2 - PLATE BRACKET

M6 THRU



(QTY1) 295-01852 - ENCODER PLATE



MATERIAL: **NOTE:** ENSURE: SHARP EDGES AND BORES ARE DEBURRED SURFACE FINISH HAS NO BLEMISHES OR SCRATCHES AND PARTS ARE CLEAN

FINISH: **SCALE:** UNLESS OTHERWISE TOLERANCES:- 0 DECIMAL PLACES ±0.5
 N.T.S. STATED:- 1 DECIMAL PLACE ±0.2
 DIMENSIONS ARE IN M.M. 2 DECIMAL PLACES ±0.1
 THREADS ARE METRIC COARSE ANGULAR ±1°

WEIGHT: 0.21 KG

TITLE: UBKS01 - BRACKET KIT

REV	DATE	ECO	ALTERATION	
1	25/04/22	ECO-495647	MISC DESIGN AND BOM CHANGES	CWH

DRAWN:	C. WHITMORE	21/06/2021
CHECKED:		
APPROVED:		

Leicester **NEWALL** England

THIS DRAWING IS THE PROPERTY OF NEWALL MEASUREMENT SYSTEMS LIMITED. THE INFORMATION THEREON MAY NOT BE COPIED OR USED WITHOUT WRITTEN PERMISSION

SHEET	1 OF 2	DRAWING NUMBER	023-82564	REV. ISS.	1
--------------	--------	-----------------------	-----------	------------------	---